

NOTES: (UNLESS OTHERWISE SPECIFIED):

1. SWITCH CHARACTERISTICS:

| | |
|------------------------|--------------|
| REST POSITION | .730 TO .790 |
| PRETRAVEL: | .125 MAX. |
| OPERATING POSITION: | .610 TO .710 |
| OVER-TRAVEL: | .100 MIN. |
| MOVEMENT DIFFERENTIAL: | .075 MAX. |
| OPERATING FORCE grams: | 737 MAX. |

BUTTON POSITION
AT FULL OVERTRAVEL. .520 MAX.

ALL CHARACTERISTICS ARE TAKEN AT THE ACTUATION LINE AND MEASURED FROM THE REFERENCE LINE.

CHEAT INTERLOCK CHARACTERISTICS:

| | |
|---------------------------|--------------|
| OPERATING POS. ----- | .800 TO .900 |
| PRE-TRAVEL ----- | .155 MAX. |
| OVERTRAVEL ----- | .030 MIN. |
| MOVE DIFF. ----- | .090 MAX. |
| OPERATING FORCE grams --- | 800 MAX. |
| FULL OVER-TRAVEL: ----- | .980 MAX. |

2.  ELECTRICAL RATINGS:

10 A, 125/250 VAC
1/3 HP 125/250 VAC



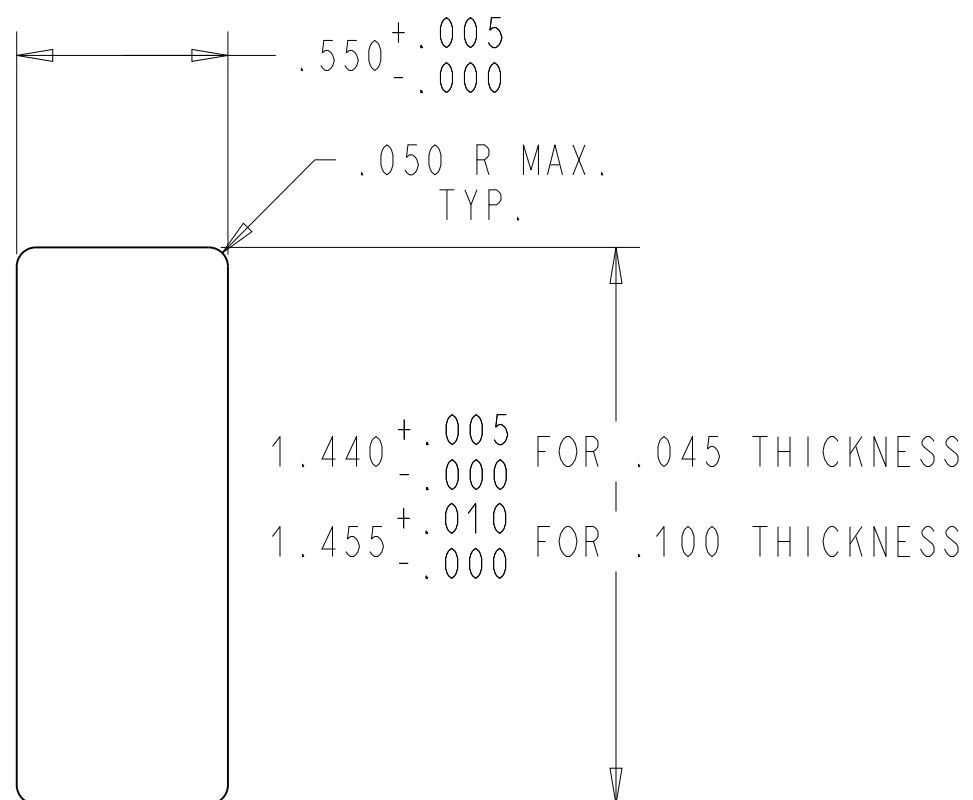
10(4) A 250V, 50E3, 40T85.

3. TERMINALS:

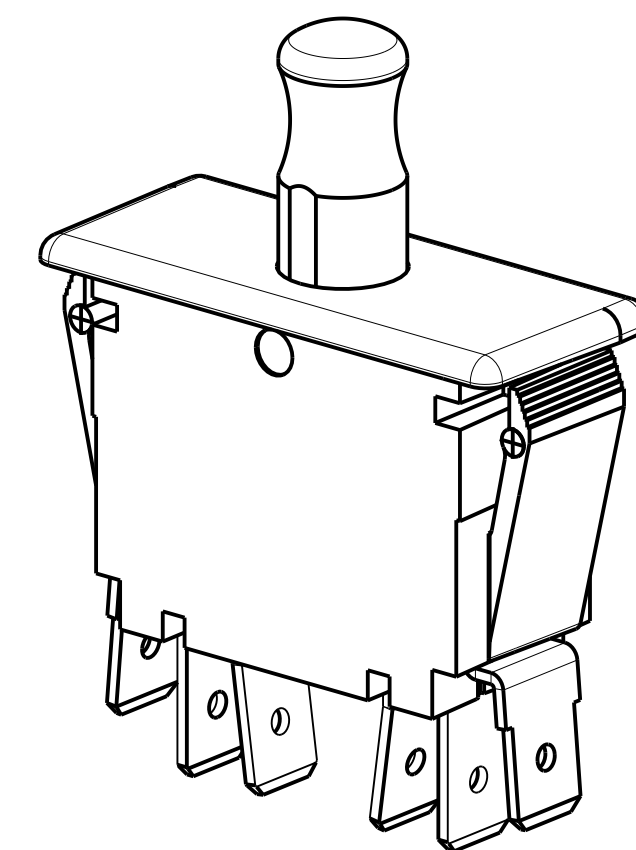
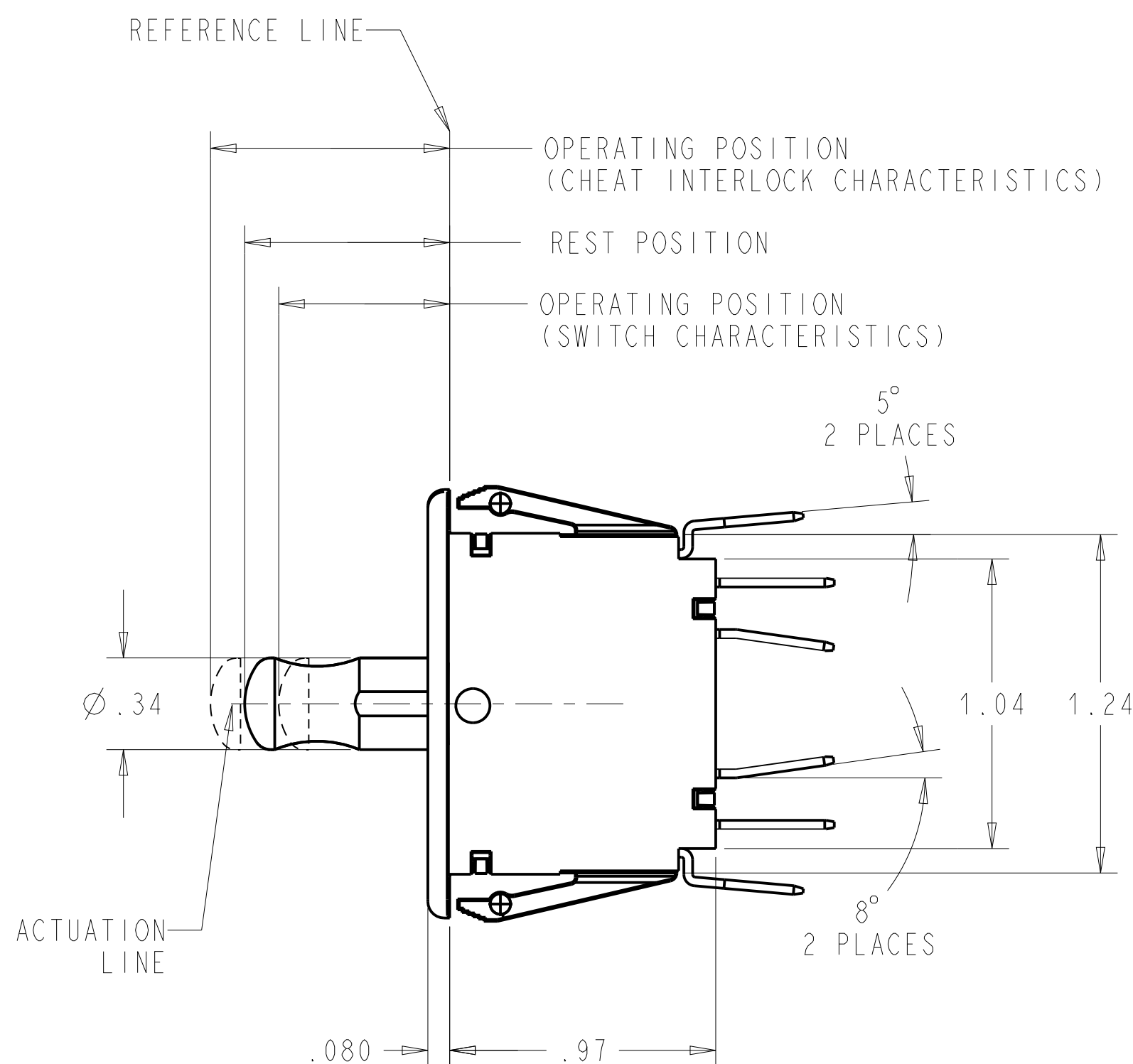
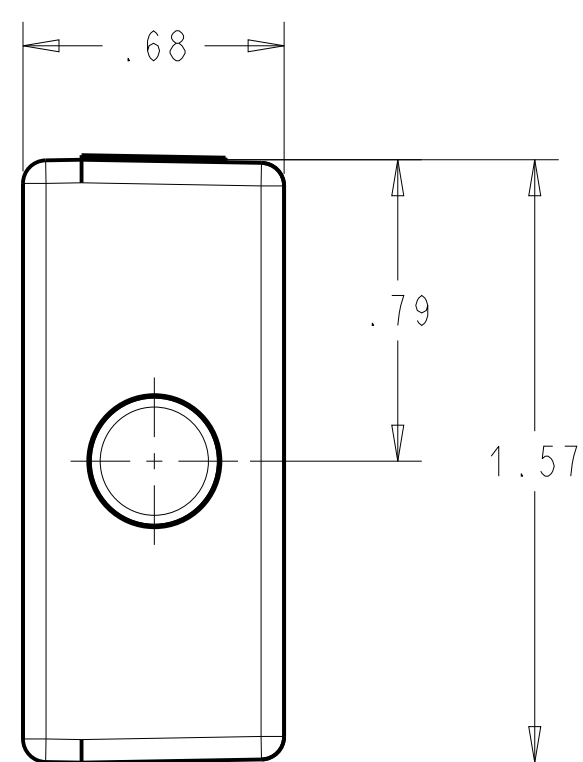
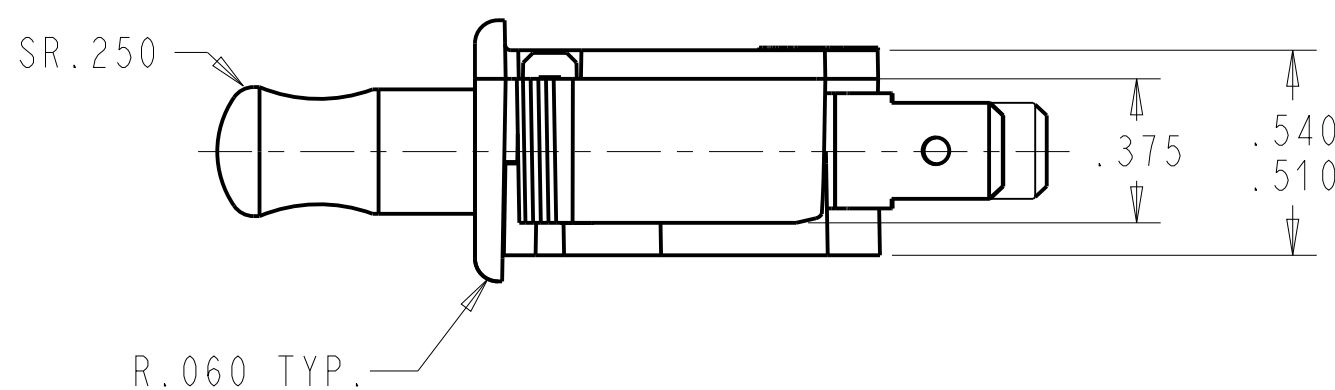
ARE .250 WIDE X .032 THICKNESS.

4. RECOGNIZED TO U.S. AND CANADIAN REQUIREMENTS UNDER THE COMPONENT RECOGNITION PROGRAM OF UNDERWRITERS LABORATORIES, INC.

5. TEMPERATURE RATINGS: -40°C TO +85°C



PANEL CUTOUT DETAIL
RECOMMENDED
PANEL THICKNESS
.045-.100



DWN: J. DOLNIK
APVD: RC
DATE: 04-Jun-02

THIRD ANGLE PROJECTION

CONFIDENTIAL AND PROPRIETARY:
ALL INFORMATION OR INVENTIONS CONTAINED IN THIS DOCUMENT OR DERIVED FROM THE INFORMATION THEREIN IS OWNED BY ZF ELECTRONIC SYSTEMS, AND IS CONFIDENTIAL AND PROPRIETARY. REVIEW OR POSSESSION OF THIS DOCUMENT INDICATES AGREEMENT THAT SUCH INFORMATION AND INVENTIONS WILL NOT BE DISCLOSED, REPRODUCED OR OTHERWISE USED IN ANY WAY WITHOUT EXPRESS WRITTEN PERMISSION FROM AN AUTHORIZED REPRESENTATIVE OF ZF ELECTRONIC SYSTEMS.



ZF Electronic Systems

11200 88th AVE. PLEASANT PRAIRIE, WI 53158

NAME / DESCRIPTION

SPECIFICATION DRAWING

| | | | | |
|-----|------------|-----------|------|------|
| D | Z000377659 | 9-Sept-16 | TLM | ELL |
| REV | ECO NO. | DATE | PREP | APVD |
| | | | | |

| | | | | |
|--------------|-----------|--------|---------|---------|
| PROJECT/ CSR | DWG UNITS | X.XX | X.XXX | ANGLES |
| 4000000138 | INCHES | ± 0.02 | ± 0.015 | ± 5.0 ° |

| | | |
|--------|----------|-----------|
| C | ITEM NO. | OF79-30AB |
| SCALE: | 2:1 | SH 1 OF 1 |

ORIGINAL ON PROJE